

**Sawbridgeworth Town Football Club.
Inc. Sawbridgeworth Town Women's FC
Sawbridgeworth Town Juniors FC**

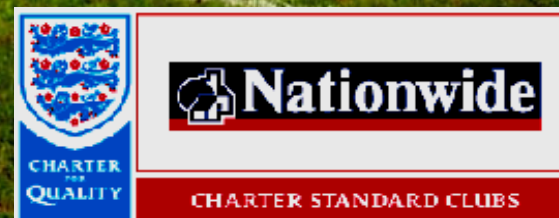
<u>Team</u>	<u>League</u>	<u>Manager/s</u>
Snr 1st Team	Essex Senior	Don Watters
Snr Reserves	Spartan Sth. Midland	Tony Crook
Snr 3rds	Bishop's Stortford	Pete Roxby Dave Robinson Mark Robinson
Snr Women's	Eastern Region	Dave Dawson
Snr Women's Res	Essex County	Michelle Wood
Under 7's Junior	Royston Crow	Lisa & Ivan Gill
Under 8's Junior	Royston Crow	Mark Dodson
Under 9's Junior	Royston Crow	Glen Gostling
Under 10's Junior	Royston Crow	Chris Rice
Under 11's Red Junior	Royston Crow	Paul Jevans / Matt Wigget
Under 11's Blue Junior	Royston Crow	Jeff Clark / Derry O'Mahoney
Under 12's Junior	Royston Crow	Tony Hook
Under 13's Red Junior	Royston Crow	Vince Norton
Under 13's Blue Junior	Royston Crow	Bernie Gallagher / Craig Dodson
Under 14's Junior	Royston Crow	Clive Lynch / Sean Dwyer
Under 15's Junior	Royston Crow	Ian Carter
Under 17's Junior	Royston Crow	Gary Tierney / Dean Savage

Sawbridgeworth Town Football Club

Est. 1897

Season 2005-2006

Official Matchday Programme



SENIOR HONOURS

ESSEX OLYMPIAN LEAGUE
Winners: 1971-72

HERTS INTERMEDIATE CUP
Winners: 1971-72

ESSEX SENIOR LEAGUE
Runners up: 1992-93

ESSEX SENIOR LEAGUE CUP
Runners up: 1980-81, 92-93, 93-94

HERTS SENIOR CENENARY TROPHY
Winners: 1990-91, 93-94
Runners up: 1992-93

HERTS CHARITY SHIELD
Winners: 1967-68
Runners up: 1984-85, 86-87

HARRY FISHER CUP
Winners: 1967-68
Runners up: 1984-85, 86-87

WEST ESSEX BORDER CUP
Winners: 1921-22, 71-72, 72-73
Runners up: 1966-67

HARLOW INTER-DIVISIONAL CUP
Winners: 1965-66
Runners up: 1964-65

HARLOW SUNDAY INTER-DIVISIONAL CUP
Runners up: 1975-76

HARLOW PREMIER DIVISION
Runners up: 1965-66

HARLOW DIVISION ONE
Winners: 1964-65

HERTS JUNIOR CUP
Winners: 1926-27
Runners up: 1965-66

HERTS INTERMEDIATE CUP RESERVE SECTION
Runners up: 1993-94

ESSEX SENIOR LEAGUE RESERVE SECTION
Winners: 1991-92, 92-93
Runners up: 1990-91, 93-94

ESSEX SNR LEAGUE CUP RESERVE SECTION
Winners 1993-94

STH MIDLAND LEAGUE FLOODLIGHT RESERVE CUP
Winners 2004-2005

Who's Who at Sawbridgeworth Town F.C.

PRESIDENT:	RON ALDER
VICE PRESIDENT:	STEVE WILLIAMS
CHAIRMAN:	STEVE DAY
VICE-CHAIRMAN:	DAVE DAWSON
SECRETARY:	LESLEY ATKINS
TREASURER:	MICHAELA NEVILLE
FIXTURES:	RAY HAYTER
FACILITIES MANAGER:	CLIVE LYNCH
GROUNDSMAN:	JIM PRITCHARD
COMMERCIAL MANAGER:	SEAN DWYER
COMMITTEE:	DAVE DAWSON STEVE HARRIS JIM GOTOBED
SNR. MANAGER:	DON WATTERS
ASSISTANTS:	ANDY PEARCEY MICK PHILLIPS JIM GOTOBED
PHYSIO	
SNR. RES. MANAGERS:	TONY CROOK
COACH:	ALAN MITCHELL
SNR. 3rd's MANAGER:	PETE ROXBY
ASSISTANT:	DAVE ROBINSON
ASSISTANT	MARK ROBINSON
WOMEN'S MANAGER:	DAVE DAWSON
RESERVES MANAGER:	MICHELLE WOOD
TREASURER:	NICKY CLIFFORD
FIXTURES:	DEBBIE WILLIAMS
FUND RAISING:	JACKIE FROST
ASSISTANT:	JOHN DAY
ASSISTANT COACH:	CLARE HALFPENNY

Club Colours

Shirts: Red & Black
Shorts: Black
Socks: Black

Affiliations

Hertfordshire County FA
Essex County FA
Eastway Essex Senior League
Spartan South Midlands League,
Eastern Region Women's Football League
Essex County Women's League
Royston Crow Youth League

Address:

Crofters End, West Road, Sawbridgeworth, Herts.

Telephone: 01279-722039

Club Facts

WOMEN'S HONOURS

As Harlow Town WFC
1991-97
(Name Change to)
Bishop's Stortford WFC
1997-2001
(Name Change to)
Sawbridgeworth Town WFC
2001-Present

WATFORD INTERNATIONAL
Fair Play Award 1991, 92, 94

WATFORD INTERNATIONAL
Runners up 1994

REDBRIDGE 6'S
Winners 1990

EASTERN REGION LEAGUE CUP
Winners 1992
Runners Up 1993, 95

EASTERN REGION
LISA SLATER MEMORIAL
SHIELD
Winners 1994

EASTERN REGION LEAGUE
PLATE
Runners up 2004

EASTERN REGION U16's 5's
Winners 1994

HIGHFIELDS TOURNAMENT
CUP
Winners 2000
Runners Up 2003

HIGHFIELDS TOURNAMENT
PLATE
Winners 2000
Runners Up 2004

HIGHFIELDS TOURNAMENT
Semi-Finalists 1991, 2003

ESSEX COUNTY WOMEN'S
CUP
Winners 1996

JUNIOR HONOURS

Sawbridgeworth Town Football Club

Looking for a venue for your reception or party



The function room can be decorated by you for your function to suit your needs. A fully equipped bar that adjoins the room is discretely placed in the back corner but still has ample access. Licensed for 100 people with adequate toilet facilities and safety fire evacuation points. There is off road car parking adjacent to the function room within the boundaries of the club

Function Room Hire:
Wedding Receptions
Family Parties
Office Parties
Meetings



Please contact for further information
Facilities Manager:
Clive Lynch
07973-741536

Crofters End
West Road
Sawbridgeworth
Herts

TODAYS TEAMS

Sawbridgeworth Town

Cambridge Rangers

1 Debbie Williams
2 Nicky Clifford
3 Nina Witteridge
5 Ann Anstey
6 Jackie Stott
7 Robyn McFayden
8 Laura Day
9 Gaynor Fisher
10 Joanne Gregory
11 Judith Duffin
12 Hannah Fraser
14 Kelly Mullender
16 Natalie Till
17 Clare Halfpenny
20 Carlye Stein

Louise Augarde
Nicky Brewin
Ruth Chipperfield
Caroline Clarke
Rebecca Collis
Jeanette Cossar
Elise Devito
Sarah Duncanson
Gina Ghensi
Michelle Green
Carrie Hurlebrink
Tanya Izzard
Peggy Keeler
Diana lamaison
Caroline Lewis
Aimee Morgans
Calire Pembery
Uma Ramaswahi
Natalie Scrull
Alison Smethurst
Natalie Tucker
Jenny Turnbull
Lisa Wears
Jodie Williams
Emma Wren
Nicola Wright

Today's Referee: Mr Ken Ward (Level 6 Hertfordshire)

Next Home Game: 11th Spetember 2.00pm Kick Off
Tottenham Hotspur FA Women's Cup

Admission Fee £2.00

Sawbridgeworth Town Football Club 2005-2006

Eastern Region Women's Football League

Division One West

Sunday 4th September 2005

Vs

Cambridge Rangers

Kick Off 2.00pm





The managers point of view

Firstly let me welcome the players officials and spectators of Cambridge Rangers to Crofters for this afternoons league game. We hope you enjoy your short stay with us and that you have a safe journey home afterwards.

Today sees the first league game of the season and like all the other clubs involved in the league we will all want to get off to the best possible start and here at Sawbridgeworth Town we are no different. The club has had a very good pre-season with 2 wins a draw and just 1 defeat which has set us up for this first game, also a good pre-season training with most of the first team squad available for all the sessions.

Our visitors today spent last season in the Cambridgeshire County League so although most of the Cambridge players have at some stage played within the eastern region we have not played against them for some years so lets look forward to an encouraging performance that sees Women's football prevail.

We must introduce the three new players to the Sawbo squad for this season. We have transferred in from Southend Ladies Hannah Fraser and from White Lions who have withdrawn from the league this season Gaynor Fisher and Carlye Stein. We have also introduced a reserve team to the club which will play in the Essex County League this coming season. So in 3 months we have moved forward in leaps and bounds and now the proof of all that work is about to be tested.

The club as a whole has also seen changes as the main pitch has had drainage added across the pitch which should alleviate the puddle that appears every winter also ground painting and general upgrading to make the place a bit more acceptable.

You will now be reading a different programme set up as we now integrate into the main club, as the season progresses we will be integral in the senior men's programme as well as the senior men's team will be an integral part of the ladies programme.

All that is left to say now is have a great game, show respect to the official and your opponents during the game and good luck.

Dave Dawson (Manager)

Division One West Fixtures 2005-2006

Date	H/A	team	scorers
31-07-05	H	Chelmsford City (friendly)	Day, Duffin 2 - 2
07-08-05	A	Haringey Borough (friendly)	Duffin 1 - 5
14-08-05	H	Saffron Walden (friendly)	Till 3, 10G 4 - 0
21-08-05	A	Harlow Athletic (friendly)	Day, Stein, Halfpenny 3 - 0
04-09-05	H	Cambridge Rangers	-
11-09-05	H	Tottenham Hotspur (FACup)	-
18-09-05	A	Kempston Rovers	-
21-09-05	A	Hoddesdon Owls	Provisional date This game to be a night match -
25-09-05	H	Arlesey Town (or FACUP)	-
02-10-05	A	Kings Sports	-
09-10-05	H	Huntingdon Town	-
16-10-05	A	Bushy Rangers (HCC)	-
23-10-05	H	Hitchin Hearts (or FACUP)	-
30-10-05	A	Kettering Town	-
06-11-05		League Cup	-
13-11-05	H	Cottenham United (or FACUP)	-
20-11-05	A	Cambridge Rangers (or HCC)	-
27-11-05	H	Godmanchester Rovers	-
04-12-05	A	Arlesey Town (or FACUP)	-
11-12-05		League Cup	-
18-12-05	H	Kings Sports	-
08-01-06	A	Huntingdon Town (or FACUP)	-
15-01-06	H	Stevenage Borough	-
22-01-06		League Cup	-
29-01-06	H	Kempston Rovers (or FACUP)	-
05-02-06	A	Stevenage Borough	-
12-02-06		League Cup	-
19-02-06	H	Kettering Town	-
26-02-06		League Cup	-
05-03-06	A	Cottenham United	-
12-03-06		League Cup	-
TBA	A	Godmanchester Rovers	This date to be Agreed -
TBA	A	Stevenage Borough	-
26-03-06			-
02-04-06			-
09-04-06		League Cup Semi's	-
April	H	Hoddesdon Owls	This game to be a night match -
30-04-06			-
14-05-06		Cup Finals @ Soham Town	-

With a last minute change of pitch to make this fourth pre-season friendly a home fixture Sawbo entered the game without Judith Duffin (Hockey tour in Prague) Jackie Stott (Knee injury) and Maria Hosier-Salter (Work Commitments). Sawbo were now tested as to see how the 05-06 remaining first team squad would react to these missing players.

The first twenty minutes were fairly even with Harlow attacking down the slope and gaining ground into the Sawbo final third. There seemed to be something missing in the Sawbo game play as defensively the ball was being cleared hastily instead of patiently and this gave some impetus to Harlow to come forward again. From a poor defensive clearance Harlow gained a corner and were unlucky to see the ball bounce about the 6 yard box and when the shot came in the ball hit the post and was cleared by Gaynor Fisher for a throw. This small error had a good effect to the Sawbo side and for the rest of the half they began to keep the ball on the ground and to play football.



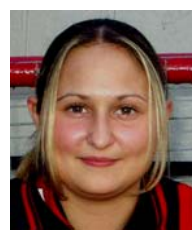
The second half saw a change in goal as Jackie Frost replaced Debbie Williams and she continued where she left off the previous week with another sound performance. New signing Fisher began to get into the game more as the half continued along side another new signing Carlye Stein who was playing central midfield. The home side opened the scoring with a well created goal when Carlye Stein was found and she played the ball across the box for the unmarked Laura Day to side foot the ball into the far corner on 53 minutes. Kelly Mullender was the next roll on sub as she replaced Claire Halfpenny on 61 minutes and from a neat move down the Sawbo left Mullender



played the ball to Stein who lobbed the keeper from the edge of the box for Sawbo's 2nd on 70 minutes. Halfpenny was asked to rejoin the game when on 75 minutes Day was caught on the top of the foot after trying a shot from just inside the box. Halfpenny used her pace to latch onto an Ann Anstey through ball and she cool as you like fired the ball home for the third Sawbo goal on 83 minutes. The openings were able to be created because of Sawbo's superior fitness levels as in the last 20 minutes the majority of the Harlow side were not able to match the forward or defensive speed of the Sawbo team.

This final preseason friendly has given the squad a definite boost for the ensuing season as with four games played there has been just one defeat by premier side Haringey Borough but wins against Saffron Walden Town, and Harlow Athletic plus a first game draw with Chelmsford City has allowed the new signings to settle a little and to allow the squad the opportunity to enter the first game of the season running with a lot of confidence.

Squad: D.Williams, N.Clifford, R.McFayden, N.Witteridge, H.Fraser, J.Gregory, C.Stein, A.Anstey, C.Halfpenny, L.Day, N.Till, J.Frost, G.Fisher, K.Mullender



Laura Day



Carlye Stein



Clare Halfpenny

A trio of goal scorers

A very competitive game that saw this pre-season friendly ebb and flow as each side failed to dominate.

Early pressure from Sawbo nearly earned the opening goal but as this was the first game to be played since last season players were forgiven for the lack of direction. Sawbo earned another chance and again the finishing was below that required. With the early chances missed Chelmsford against the run of play counter attacked and a defensive slip allowed the City forward the space to fire home for the opening goal on 15 minutes. Sawbo were still playing the better possession football but again another attack was broken up and City were released down the right flank and the forward fired home a superb shot from just inside the area to put the home side under real pressure. Jackie Stott came closest to reducing the arrears as she managed to get between keeper and ball but her swivel and shot just eluded the far post and the ball went for a goal kick. With some 20 minutes gone Judith Duffin (an ex Chelmsford City player) reduced the deficit as she converted by the near post. This goal lifted Sawbo a touch and they started once again to play the passing football. Winning the ball in midfield, forward Laura Day was released down the middle of the park and she outpaced the retreating defender and shot home past the diving City keeper to level the scores.

During the first half and half time Sawbo were making substitutions as they used the roll on roll off situation to use and try out two new players who were looking to sign for next season and one new player who had been signed earlier but had yet to play a competitive game for the club



Gaynor Fisher

Hannah Fraser who had already impressed at pre-season training had been signed a few weeks earlier but Gaynor Fisher (ex White Lions) and Maria Hosier-Salter (ex Bishop's Stortford and Langford) were playing for the club for the opportunity to sign for next season.



Hannah Fraser

The second half started and was almost a mirror image of the first period but Chelmsford were seeing more of the ball. Solid defending and midfield support prevented any further goals against but shots were still aimed at the Sawbo goal, and but for some wild finishing could have put Debbie Williams in the Sawbo goal under real pressure. At the other end two outstanding saves by the Chelmsford keeper kept them in the game as Sawbo searched for the winner.

In the end the result just about reflected a competitive game which will give both sets of players an insight into what will be required of them for next season.

Next weekend Sawbo travel to Haringey Borough who play in the ERWFL Premier Division for our second pre-season friendly.

Sawbo Squad:- D.Williams, N.Clifford, N.Witteridge, R. McFayden, C.Halfpenny, J.Gregory, A.Anstey, J.Stott, J.Duffin, N.Till, L.Day, H.Fraser, M.Hosier-Salter, K.Mullender, G.Fisher.



Goal Scorers:
< Judith Duffin
Laura Day



Sawbow travelled to Premier Division side Haringey Borough with just a bare 11 players for this pre-season friendly. Having to shuffle the pack and to play Carly Stein in her first game for the club meant there had to be instant understanding and confidence in the players as this was going to be a stern test of the team.

Early exchanges saw both sides create chances but Sawbo were by far the more confident with shots by Laura Day, Judith Duffin, Jackie Stott and Kelly Mullender all just missing the target or going straight into the keepers hands. Then with another attack Carly Stein found Judith Duffin who this time from the corner of the box found the far corner to put Sawbo deservedly at this time 1 up on 25 minutes. The goal sparked Haringey into more life and after a Sawbo attack broke down a quick counter attack caught the Sawbo defence too square and they paid the price by conceding an equalizing goal on 30 minutes. 2 minutes later Haringey got their noses in front when from an attack down the right flank the ball was driven into the centre of the park just outside the box which the Haringey player controlled and shot from just inside the box to give the home side the lead on 34 minutes. Then it seemed that the referee saw something that no body else did and he awarded a penalty to Haringey. From the penalty kick Jackie Frost in the Sawbo goal made a superb save but was unable to hold the ball because of the power of the shot however Haringey were the quickest to react to the save and the ball was placed into the net past the diving hands of Frost to give the home side a 2 goal advantage just before the break.



Jackie Stott

With a few more instructions at the interval Sawbo entered the second half with a little more determination. Just like the first half Sawbo were not outplayed it was just the fact of poor finishing that saw Haringey with a 2 goal advantage and during the first 25 minutes of the second half poor finishing again from Day, Stott and Duffin allowed Haringey to gain in confidence and a fourth goal was conceded on 75 minutes with Haringey splitting the makeshift Sawbo back line to gain the space required. Just before the final whistle Haringey added their fifth but although the score line suggests a one sided game it was really a game of poor finishing against good finishing. Sawbo more than matched their opposition throughout the game and had more chances but they failed to make the killer shot hit the back of the net. Plenty of positives have come from the game as overall the performance was more than expected taking into consideration the format of the team.

We now look forward to a home game against Saffron Walden next week in another pre season friendly as we get ready for next season.

Squad: J.Frost, N.Clifford, R.McFayden, C.Halfpenny, J.Pyne, G.Fisher, J.Stott, C.Stein, K.Mullender, J.Duffin, L.Day.



Judith Duffin
2 goals from 2 starts

Sawbo's third friendly was against Essex County Women's side Saffron Walden Town. Previous meetings between these two sides has seen the spoils go both ways and it was understood that to mark the progress of the Robins a good result today would be encouraging, With the squad almost up to full strength (Debbie Williams neck, Hannah Fraser just returning from holiday, Nina Witteridge just going on holiday) the game would allow players the opportunity to make their mark.

Early pressure by the home side up the slope and against the wind almost resulted in at least two early goals but the final ball was just missing the target. Natalie Till and Laura Day both went close. By now it was evident that the Saffron Walden keeper was not really a keeper as her handling and positioning was questionable (later to find out she was playing her first ever game) the Sawbow forward line kept the pressure up but kept failing at the last hurdle. Then there was the stroke of luck that certainly does change games Jackie Stott was released down the left flank after a quick 1-2 with Maria Hosier-Salter and her cross into the box put pressure on the Walden defender who tried in vain to clear with her head only to find it hitting the net for the opening goal on 14 minutes. Two efforts of note from Till midway through the half was all that was to show for the effort put in but the teams turned around with Sawbo having a goal advantage.

The first part of the second half saw Walden produce their best football of the game and at times had the Sawbow defence under pressure but playing her first game at right back Gaynor Fisher and centre backs Robyn McFayden and stand in Ann Anstey held firm with support from left back Clare Halfpenny the Sawbow back line was strong and stood the task well. Nicky Clifford was put into the fray as well during this time as a roll on roll off sub and still the back line held firm. On 62 minutes Sawbow produced the football we had all expected, After winning the ball in midfield Till was released down the middle of the park and from about 23 yards out guided the ball over the outstretched hands of the Walden keeper to give Sawbow a much deserved 2 goal advantage. Some 3 minutes later it was Till again who collected the ball from a forward pass and calmly lobbed the keeper from some 25 yards to extend the lead to 3-0. Till got her hat trick and Sawbow's 4th on 75 minutes after sound approach play found her free to drive the ball home.



Robyn McFayden

All in all a solid performance from the girls of Sawbridgeworth Town Football Club with the team beginning to work as a team irrespective of who was playing where. Substitutions allowing the manager to play players in less than familiar roles but still getting a performance to be proud of.

Young Stephanie Hawes was introduced to Women's football for the first time in 2 stints of 15 minutes at the end of each half and showed why the club has signed her so quickly. Certainly a talent to be watched as she progresses through her learning of football over the next couple of seasons.

Squad:- J.Frost, G.Fisher, R.McFayden, A.Anstey, C.Halfpenny, J.Gregory, C.Stein, J.Stott, M.Hosier-Salter, L.Day, N.Till. J.Duffin, N.Clifford, S.Hawes.



Natalie Till
First hat-trick of the season

SWI Ltd

Electrical Contractor

SWI has a proven track record for establishing and Maintaining quality within the electrical installation industry

The wealth of experience contained within the close pool of staff has been developed over many years of contracting in some of the Capitals most prestigious Blue Chip Companies.

SWI has developed a very close and mutually beneficial relationship with the worlds largest pharmaceutical company. This has allowed SWI to develop testing and inspection procedures, enabling the highest standards of service throughout the installation schedule.

For more information contact Steve Williams on

01279 865884

SWI Ltd
Highbury
Springhall Road
Sawbridgeworth
Herts. CM21 9ET

T:01279865884 – F:01279 865884

E: info@swi-electrical.com W: www.swi-electrical.com

Panache

The Premier Quality Dry Cleaners



SAME DAY CLEANING ON REQUEST
REPAIRS AND ALTERATIONS
HAND FINISHED EXECUTIVE SERVICE

Specialists in
Evening Wear : Wedding Dresses
Silk : Suede : Leather : Wax Jackets
Curtains : Soft Furnishings : Duwets

OPENING HOURS
MONDAY TO
SATURDAY
7.30 AM - 6.00 PM
TELEPHONE
01279 725017

FREE LOCAL COLLECTION AND DELIVERY

Unit 1, Bakers Walk, Sawbridgeworth, Herts CM21 9QE
(Next to Budgens Supermarket)
ALL MAJOR CREDIT/DEBIT CARDS ACCEPTED



Unit 4

Haslemere Industrial Estate
Pig Lane, Bishop's Stortford
Herts. CM23 3HG

Tel: 01279-503010 Fax:01279-505373

A P & R Domestic

Domestic Appliance

Repairs

&

Service

Tel: 01279-320239

Mobile: 07973-282240

A small charge can
give you this space
for the entire
season

For details contact
the club on
01279 722039

S. T. DAY

Electrical Contractors

All types of work undertaken

Our services Include:

- Security Lighting
- Smoke Alarms
- Installations / Rewires
- Extra Sockets
- Lighting
- Testing & Inspection

Telephone: 01279-725665, Mobile: 07802-233944

49 Cambridge Road Sawbridgeworth, CM21 9JP

**An advert here
can promote your
business for less
than the cost of a
Sunday newspaper
per week.**

**Contact the club
on 01279-722039
to discuss rates**

A small charge can
give you this space
for the entire
season

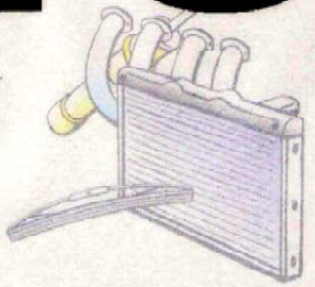
For details contact
the club on
01279 722039

MATT'S

ALL
MAKES
&
MODELS

UTOSS


FIXED
PRICE
SERVICING



ALL MECHANICAL WORK UNDERTAKEN

7947668450

- ABS FAULTS
- AIR BAG FAULTS
- TRANSMISSION FAULTS
- ENGINE MANAGEMENT FAULTS



**We can offer competitive
rates for all advertising
within this programme or on
the perimeter boards around
the ground.**

**For an informal discussion
contact the club on
01279-722039**

The programme covers
not only the senior first
team of
Sawbridgeworth Town but
also the Senior reserve
Team, The Senior
Women's first and reserve
teams as well. With all the
games available this could
equate to a total of around
80 adverts a season. To
discuss our competitive
rates call the club on
01279-722039

THE FA YOUTH CUP in partnership with Pepsi – 54th SEASON
PRELIMINARY ROUND
TIES TO BE PLAYED WEEK COMMENCING MONDAY 12 SEPTEMBER 2005

			Match Date
1	Woodley Sports <i>(at Lancaster City FC)</i>	v	Lancaster City 18 Sep 3.00
2	Chadderton	v	Marine
3	Leigh RMI	v	Frickley Athletic 13 Sep 7.30
4	Belper Town	v	Eccleshall 14 Sep 7.30
5	Teversal	v	Eastwood Town 14 Sep 7.30
6	Burton Albion	v	Redditch United 14 Sep 7.45
7	Matlock Town	v	Ford Sports Daventry 14 Sep 7.30
8	Chasetown	v	Tamworth 14 Sep 7.45
9	AFC Telford United	v	Mickleover Sports
10	Nuneaton Borough	v	Sutton Coldfield Town 12 Sep 7.45
11	Blackstones	v	Corby Town 12 Sep 7.45
12	Stotfold	v	St Albans City 14 Sep 7.30
13	Aylesbury United	v	Chesham United 14 Sep 7.30
14	Kings Lynn	v	Raunds Town 14 Sep 7.45
15	Harwich & Parkeston	v	Dereham Town
16	North Greenford United	v	Boreham Wood 14 Sep 7.30
17	Harlow Town	v	Brentwood Town
18	Hampton & Richmond Borough	v	Hayes 14 Sep 7.45
19	Long Buckby <i>(walkover for Long Buckby – Thame United withdrawn)</i>	v	Thame United
20	Harrow Borough	v	Enfield Town 14 Sep 7.30
21	Bury Town	v	Diss Town 12 Sep 7.45
22	Bugbrooke St Michaels	v	Histon 13 Sep 7.45
23	Harefield United	v	Royston Town 14 Sep 7.45
24	Concord Rangers	v	Grays Athletic 14 Sep 7.45
25	Redbridge	v	Berkhamsted Town
26	Whitton United	v	Great Yarmouth Town 13 Sep 7.45
27	Tring Athletic	v	Buckingham Town 15 Sep 7.45
28	Newport Pagnell Town	v	Barton Rovers 14 Sep 7.45
29	Colney Heath	v	Bedford Town 15 Sep 7.45
30	Sawbridgeworth Town	v	Wealdstone 14 Sep 7.00
31	AFC Kempston Rovers	v	St Margaretsbury 14 Sep 7.45
32	Long Melford	v	Southend Manor 14 Sep 7.45
33	East Thurrock United	v	Woodbridge Town 14 Sep 7.30
34	Halstead Town	v	Stansted
35	Ruislip Manor	v	Leighton Town 14 Sep 7.45
36	Burnham Ramblers	v	Hitchin Town 15 Sep 7.45
37	AFC Newbury	v	Westfield 15 Sep 7.45
38	Herne Bay	v	Ashford Town 14 Sep 7.45
39	Godalming Town	v	Fleet Town 14 Sep 7.45
40	Thamesmead Town	v	Bedfont 13 Sep 7.45
41	Camberley Town	v	AFC Wimbledon 14 Sep 7.45
42	Carshalton Athletic	v	Erith Town
43	Cobham	v	Ash United 15 Sep 7.45
44	Three Bridges <i>(walkover for Three Bridges – Havant & Waterlooville withdrawn)</i>	v	Havant & Waterlooville
45	Carterton	v	Oxford City 15 Sep 7.45
46	Reading Town	v	Ashford Town (Middx) 14 Sep 7.45

MATCH DATES

All ties must be played in the week commencing Monday 12 September 2005. Kick-off times will be 7.00 pm for midweek matches and 3.00 pm for weekend matches unless otherwise agreed by both clubs. Home Clubs yet to return the Match Arrangement Form must do so immediately by faxing to 020 7287 5189.

Saturday or Sunday dates will only be accepted if both Club's are in agreement and if each Club's League give approval for League fixtures to be re-arranged. If problems are experienced in fixing a date to avoid 1st

The Football Association Women's Cup

In partnership with Nationwide

First Round Qualifying

Sunday 11th September 2005



Sawbridgeworth Town WFC

versus

Tottenham Hotspur LFC



Kick off 2.00pm

Admission £2.00

Programmes £1.00

The Football Association Youth Cup

In partnership with Pepsi

Preliminary Round

Wednesday 14th September 2005



Sawbridgeworth Town FC

versus

Wealdstone FC



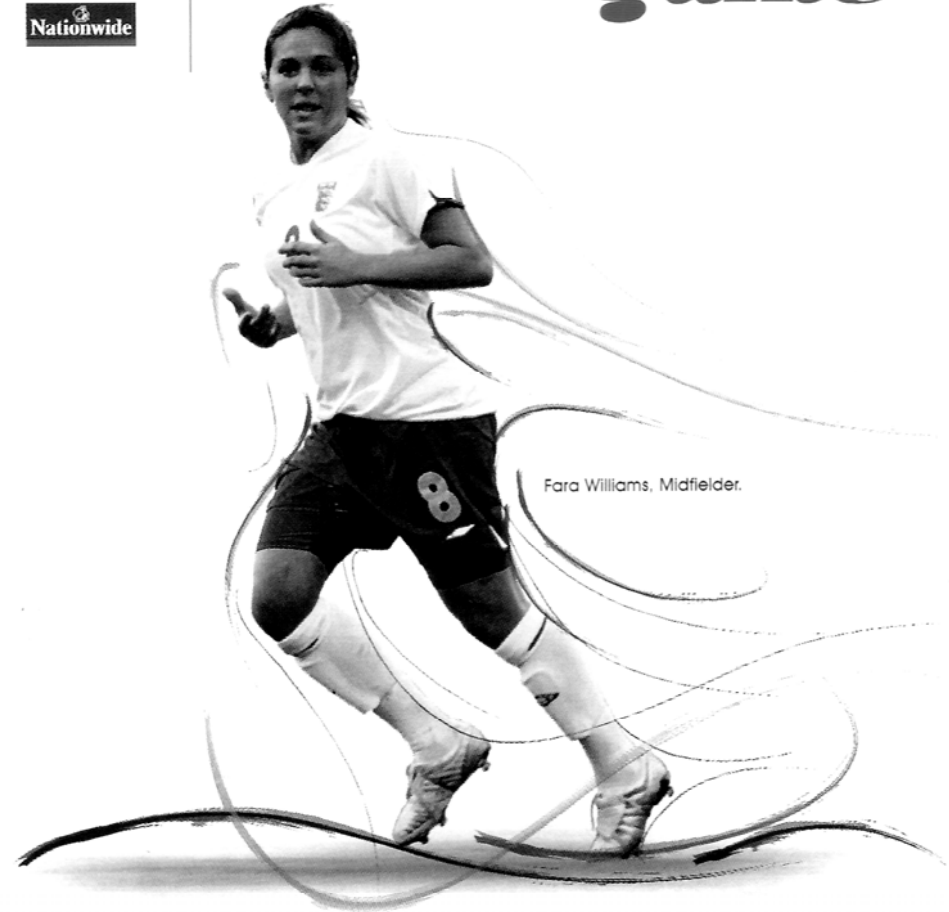
Kick off 7.00pm

Admission £2.00

Programmes £1.00



***A more
beautiful
game***



Fara Williams, Midfielder.

now go play | TheFA.com/women

Sawbridgeworth Town Women's Reserves

Essex County Women's League

Division Three

Team	pld	w	d	l	f	a	pts
AFC Sudbury	0	0	0	0	0	0	0
Braintree Town	0	0	0	0	0	0	0
Colchester Reserves	0	0	0	0	0	0	0
Ipswich Town Reserves	0	0	0	0	0	0	0
Little Oakley	0	0	0	0	0	0	0
Old Island	0	0	0	0	0	0	0
Redbridge Reserves	0	0	0	0	0	0	0
Sawbridgeworth Town Res.	0	0	0	0	0	0	0

Proposed Reserve Team Squad 2005-2006

Kelly Aubrey
 Maggie Bell-Gam
 Gaby Bonich
 Kerry Crump
 Jackie Frost
 Lisa Harris
 Stephanie Hawes
 Donna Keating
 Christina Le Count
 Claire Long
 Claire Poulton
 Jessica Pyne
 Dorothy Smith
 Charlotte Turner
 Michelle Wood (Player / Manager)

Possible additions

Luana Helm
 Laura Sweeney
 Kelly Taylor

Sawbridgeworth Town Women's Pre-Season 05-06

Sawbridgeworth Town Women's started their pre-season with a home game against Eastern Region Division One East side Chelmsford City and from a shaky start that saw the visitors go 2 goals up Sawbo evened the match up with a goal apiece from Laura Day and Judith Duffin. With just 11 players available due to holidays and working the ladies travelled to White Hart Lane to play Eastern Region Premier Division side Haringey Borough in the 2nd match and although the 5-1 defeat on paper looks a one sided game the ladies could quite easily have come away with a 7-5 victory if the finishing had been more accurate. Judith Duffin was again the goal scorer. The 3rd pre-season game was pitched against Essex County Women's League Division One side Saffron Walden and the difference in levels showed, Walden were not at their peak but Sawbo were getting there and a hat trick from Natalie Till and a forced own goal gave a creditable 4-0 score line to the Sawbridgeworth Town Women's team. The ladies last pre-season game was against arch rivals Harlow Athletic (formally Harlow Town) who now play in the Essex County Women's League Division Two after being relegated last term. A very even first half then saw a much improved second half as Sawbo began to take hold. The superior fitness of the home side started to tell in the last 25 minutes and goals from Laura Day, Carlye Stein and Clare Halfpenny secured a 3-0 win and the end of a fairly successful pre-season.

The ladies kick off their season with a home game against Cambridge Rangers on Sunday September 4th 2005 followed the following week with an FA Women's Cup game against Tottenham Hotspur Ladies. Being the women's section of Spurs I am sure that there will be a few followers so it is hoped that Sawbridgeworth can match those and support the ladies through to the next round.

Sunday 11th September 2005
The FA Women's Cup
1st Round Qualifying
Home Vs Tottenham Hotspur
Kick Off 2.00pm

Sawbridgeworth Town Women's Football Club

Eastern Region Women's Football League

Division One West

Team	pld	w	d	l	f	a	pts
Arlesey Town	0	0	0	0	0	0	0
Cambridge Rangers	0	0	0	0	0	0	0
Cottenham United	0	0	0	0	0	0	0
Godmanchester Rovers	0	0	0	0	0	0	0
Hitchin Hearts	0	0	0	0	0	0	0
Hoddesdon Owls	0	0	0	0	0	0	0
Huntingdon Town	0	0	0	0	0	0	0
Kettering Town	0	0	0	0	0	0	0
Kempston Rovers	0	0	0	0	0	0	0
Kings Sports	0	0	0	0	0	0	0
Sawbridgeworth Town	0	0	0	0	0	0	0
Stevenage Borough	0	0	0	0	0	0	0

Proposed First Team Squad

Ann Anstey
 Nicky Clifford
 Laura Day
 Judith Duffin
 Gaynor Fisher
 Hannah Fraser
 Joanne Gregory
 Clare Halfpenny
 Maria Hosier-Salter
 Robyn McFayden
 Kelly Mullender
 Carlye Stein
 Jackie Stott
 Natalie Till
 Debbie Williams
 Nina Witteridge

Sawbridgeworth Town Women's Reserves

With the increase in demand for ladies football there was a decision made to create a women's reserve team for this coming season. Early signs were that there would be an overflowing number of girls/ladies wishing to take part but as 'D' day has approached the numbers have dwindled a little and both squads although well organised are down to the minimum numbers to be able to run the teams successfully throughout the season. It is hoped that along the way that as the teams establish themselves this season that others will venture along and become part of this growing squad of women players.

The reserves will start their football life in division three of the Essex County Women's League which will see other new teams as well as growing girls teams entering ladies football for the first time. Sawbridgeworth Town Women's Reserves can look at a tough ride as they come to terms with the rigours of ladies football in a more competitive arena than just training. With the average age of the team below 20 it shows that youth will prevail as we venture onward. The Reserves have some 9 players under the age of 17 years and playing their first season of competitive football so the learning curve is going to be steep if they are to survive. The management of the women's section as a whole is under the impression that all the squad members can and will achieve their goals if they stick to the task given. With what could be sound parental support and perhaps a few others we will be looking for at least a few points come the end of the season so that all will not be lost in the first season of football. Michelle Wood the player manager of the Reserve Team will I am sure keep a tight reign over the squad and to show them the right manner as to which they should conduct themselves to guide them along the way to eventual success. With new guide lines being introduced with regard to the manner of players attitude on and off the pitch by the Football Association it will become very important that all players conduct themselves in the correct manner.

The reserves have not yet had a game as their season does not kick off till 18th September 2005 so we will keep you all informed as to who they are playing. All the games for the women's section if being played at home will have a 2.00pm kick off.

Forthcoming Fixture

Sunday 18th September 2005
 Away Vs Redbridge Reserves